

H TIMING PULLEYS

0.500" Trapezoidal Pitch

For 2" Wide Belts

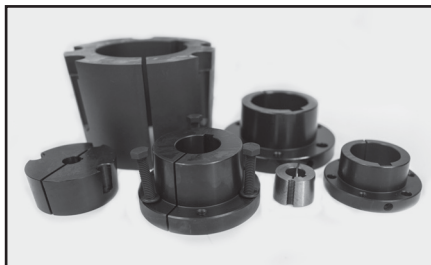
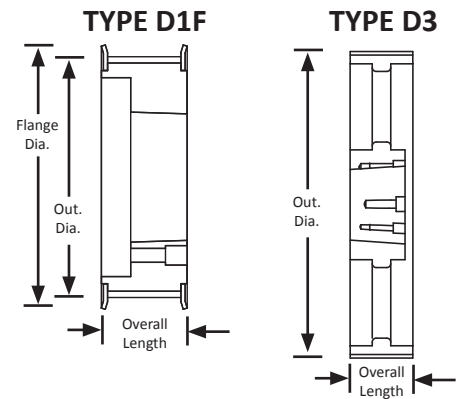
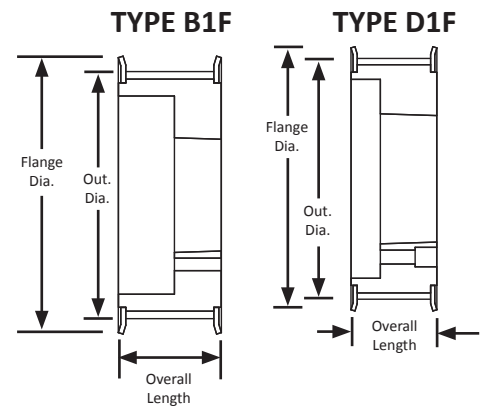
Steel/Iron

Black Oxide Plating

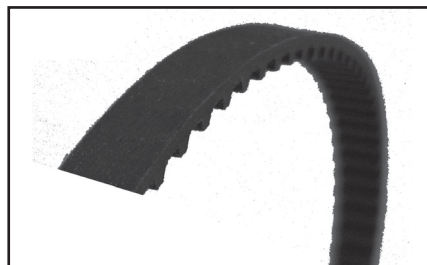
QD® Style



Part Number	No. of Teeth	Type	Pitch Dia. (in)	Out. Dia. (in)	Flange Dia. (in)	Bushing	Face Width (in)	Overall Length (in)
QD14H200	14	E1F	2.228	2.174	2.461	JA	2.344	2.344
QD16H200	16	E1F	2.546	2.492	2.780	JA	2.344	2.344
QD18H200	18	E1F	2.865	2.811	3.100	SH	2.344	2.344
QD20H200	20	E1F	3.183	3.129	3.256	SH	2.344	2.344
QD22H200	22	E1F	3.501	3.447	3.735	SD	2.344	2.344
QD24H200	24	E1F	3.820	3.766	4.050	SD	2.344	2.344
QD26H200	26	D1F	4.138	4.084	4.369	SD	2.344	2.344
QD28H200	28	D1F	4.456	4.402	4.687	SD	2.344	2.344
QD30H200	30	D1F	4.775	4.721	5.000	SD	2.344	2.344
QD32H200	32	B1F	5.093	5.039	5.320	SK	2.344	2.344
QD36H200	36	B1F	5.730	5.676	5.959	SK	2.344	2.344
QD40H200	40	B1F	6.366	6.312	6.600	SK	2.344	2.344
QD44H200	44	B1F	7.003	6.949	7.231	SK	2.344	2.344
QD48H200	48	B1F	7.639	7.585	7.867	SF	2.344	2.344
QD60H200	60	D3	9.549	9.495	-	SF	2.343	2.343
QD72H200	72	D3	11.459	11.405	-	SF	2.343	2.343
QD84H200	84	D3	13.369	13.315	-	SF	2.343	2.343
QD96H200	96	D3	15.279	15.225	-	E	2.343	2.343
QD120H200	120	D3	19.099	19.045	-	E	2.343	2.343
QD156H200	156	D3	24.828	24.774	-	E	2.343	2.343



For matching QD® bushings, see page 372.



For matching H pitch belts, see page 199.

